

[2022] ZI10227

2021 12 31

1-2

2021

12 31

1-15

[2022] ZI10227

“ 2021 12 31 ”

3101 —

2021 12 31

2021 12 31

•

2021 4 25

2021 12 31

“ ”
“ ” “ ”

2021 12 31

100% 100%

1

0.5%

1

2

1

2

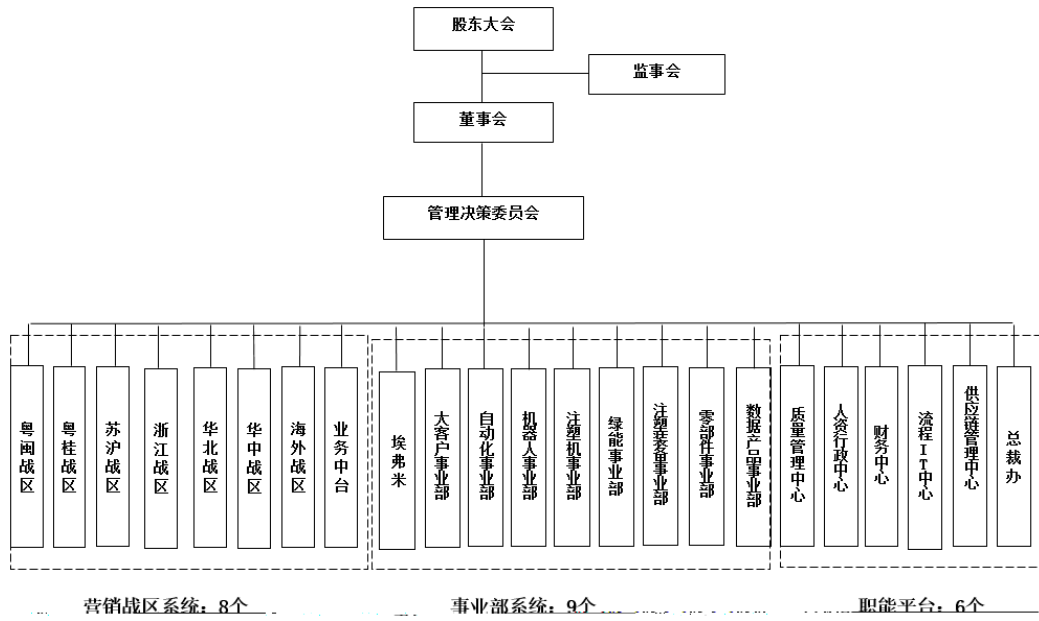
3

2

1%

0.5%

1



4

2021

1

“ ” “ 100
100 ” “
” “ ”
” ” “ ”

2

2 —

8

2021

3

8

8

“ ” “ ”

“ ” “ ”

“ ”
“ ”

2021

5

4

5

6S

GB/T 24001-2016/ISO

14001:2015

“ ”

6

7

1

50

2

/

3

ERP

4

5

6

7 2021 12 31 3,184.52

8

9

10

11

12

8

1

SAP

BPM

CRM

SRM

HR

2

3

9

()

